

ALTO / BARI SAX

HIGH SCHOOL JAZZ AUDITIONS

F CONCERT TO THE 9TH (G SCALE) - SWUNG OR STRAIGHT



B FLAT CONCERT TO THE 9TH (G SCALE) - SWUNG OR STRAIGHT



II-V7-I SCALE IN CONCERT F - SWUNG OR STRAIGHT



II-V7-I SCALE IN CONCERT B FLAT - SWUNG OR STRAIGHT



CHROMATIC SCALE - SLURRED AND STRAIGHT



TENOR SAXOPHONE

HIGH SCHOOL JAZZ AUDITIONS

F BLUES SCALE TO THE 9TH (G) - SWUNG OR STRAIGHT



3 B FLAT BLUES SCALE TO THE 9TH (C) - SWUNG OR STRAIGHT



7 II-V7-I SCALE IN CONCERT C (D) - SWUNG OR STRAIGHT



11



14 II-V7-I SCALE IN CONCERT B FLAT (C) - SWUNG OR STRAIGHT



18



21 CHROMATIC SCALE - SLURRED AND STRAIGHT



23



TRUMPET IN B \flat

HIGH SCHOOL JAZZ AUDITIONS

F BLUES SCALE TO THE 9TH (G) - SWUNG OR STRAIGHT

Musical notation for the F Blues Scale to the 9th (G) in 4/4 time. The scale is written in treble clef and consists of 12 measures. The notes are: F \flat , G \flat , A \flat , B \flat , C, D, E \flat , F, G, A, B, C. The first four measures are the ascending scale, and the last four are the descending scale.

B FLAT BLUES TO THE 9TH (C) - SWUNG OR STRAIGHT

Musical notation for the B Flat Blues to the 9th (C) in 4/4 time. The scale is written in treble clef and consists of 12 measures. The notes are: B \flat , C, D, E \flat , F, G, A, B \flat , C, D, E \flat , F. The first four measures are the ascending scale, and the last four are the descending scale.

II-V7-I SCALE IN CONCERT C (D) - SWUNG OR STRAIGHT

Musical notation for the II-V7-I Scale in Concert C (D) in 4/4 time. The scale is written in treble clef and consists of 12 measures. The notes are: D, E, F, G, A, B, C, D, E, F, G, A. The first four measures are the ascending scale, and the last four are the descending scale.

Musical notation for the II-V7-I Scale in Concert B Flat (C) in 4/4 time. The scale is written in treble clef and consists of 12 measures. The notes are: C, D, E, F, G, A, B, C, D, E, F, G. The first four measures are the ascending scale, and the last four are the descending scale.

II-V7-I SCALE IN CONCERT B FLAT (C) - SWUNG OR STRAIGHT

Musical notation for the II-V7-I Scale in Concert B Flat (C) in 4/4 time. The scale is written in treble clef and consists of 12 measures. The notes are: C, D, E, F, G, A, B, C, D, E, F, G. The first four measures are the ascending scale, and the last four are the descending scale.

Musical notation for the II-V7-I Scale in Concert B Flat (C) in 4/4 time. The scale is written in treble clef and consists of 12 measures. The notes are: C, D, E, F, G, A, B, C, D, E, F, G. The first four measures are the ascending scale, and the last four are the descending scale.

CHROMATIC SCALE - SLURRED AND STRAIGHT

Musical notation for the Chromatic Scale in 4/4 time. The scale is written in treble clef and consists of 12 measures. The notes are: C, C \sharp , C, C \sharp , C, C \sharp , C, C \sharp , C, C \sharp , C, C \sharp . The first four measures are slurred, and the last four are straight.Musical notation for the Chromatic Scale in 4/4 time. The scale is written in treble clef and consists of 12 measures. The notes are: B \flat , B \flat , B \flat , B \flat , B \flat , B \flat , B \flat , B \flat , B \flat , B \flat , B \flat , B \flat . The first four measures are slurred, and the last four are straight.

LEAD TRUMPET EXTENDED RANGE (SEE INSTRUCTIONS BELOW)

OR MORE

Musical notation for the Lead Trumpet Extended Range in 4/4 time. The scale is written in treble clef and consists of 12 measures. The notes are: G, A, B, C, D, E, F, G, A, B, C, D. The first four measures are slurred, and the last four are straight.

IF ADDITIONING FOR LEAD TRUMPET, CONTINUE PAST THE FIRST FERMATA. A STUDENT SHOULD PLAY UP TO A DESIRED NOTE (MINIMUM E FLAT) AND ADD A SMALL FERMATA DISPLAYING GOOD TONE AND CONTINUED AIR FLOW BEFORE RETURNING TO G.

HIGH SCHOOL JAZZ AUDITIONS

TROMBONE

F BLUES SCALE TO THE 9TH - SWUNG OR STRAIGHT



B FLAT BLUES TO THE 9TH - SWUNG OR STRAIGHT



II-V7-I SCALE IN C - SWUNG OR STRAIGHT



II-V7-I SCALE IN B FLAT - SWUNG OR STRAIGHT



CHROMATIC SCALE - LEGATO AND STRAIGHT



BASS TROMBONE EXTENDED RANGE (SEE INSTRUCTIONS BELOW)



IF AUDITIONING FOR BASS TROMBONE, CONTINUE PAST THE FIRST FERMATA. A STUDENT SHOULD GO DOWN TO A DESIRED NOTE AND ADD A SMALL FERMATA DISPLAYING GOOD TONE AND CONTINUED AIR FLOW BEFORE RETURNING TO F.

STRING BASS

HIGH SCHOOL JAZZ AUDITIONS

F BLUES SCALE TO THE 9TH - SWUNG OR STRAIGHT

Musical notation for the F Blues Scale to the 9th in 4/4 time. The scale is written in bass clef and consists of 12 measures. The notes are: F2, G2, A2, Bb2, C3, D3, Eb3, F3, G3, A3, Bb3, C4. The first six measures are eighth notes, and the last six are quarter notes.

B FLAT BLUES SCALE TO THE 9TH - SWUNG OR STRAIGHT

Musical notation for the B Flat Blues Scale to the 9th in 4/4 time. The scale is written in bass clef and consists of 12 measures. The notes are: Bb2, C3, D3, Eb3, F3, G3, Ab3, Bb3, C4, D4, Eb4, F4. The first six measures are eighth notes, and the last six are quarter notes.

B-V7-I SCALE IN C - SWUNG OR STRAIGHT

Musical notation for the B-V7-I Scale in C in 4/4 time. The scale is written in bass clef and consists of 12 measures. The notes are: B2, C3, D3, E3, F3, G3, A3, B3, C4, D4, E4, F4. The first six measures are eighth notes, and the last six are quarter notes.

Musical notation for the B-V7-I Scale in C in 4/4 time. The scale is written in bass clef and consists of 8 measures. The notes are: G3, A3, B3, C4, D4, E4, F4, G4. The first four measures are eighth notes, and the last four are quarter notes.

B-V7-I SCALE IN B FLAT - SWUNG OR STRAIGHT

Musical notation for the B-V7-I Scale in B Flat in 4/4 time. The scale is written in bass clef and consists of 12 measures. The notes are: Bb2, C3, D3, Eb3, F3, G3, Ab3, Bb3, C4, D4, Eb4, F4. The first six measures are eighth notes, and the last six are quarter notes.

Musical notation for the B-V7-I Scale in B Flat in 4/4 time. The scale is written in bass clef and consists of 8 measures. The notes are: G3, Ab3, Bb3, C4, D4, Eb4, F4, G4. The first four measures are eighth notes, and the last four are quarter notes.

CHROMATIC SCALE - STRAIGHT

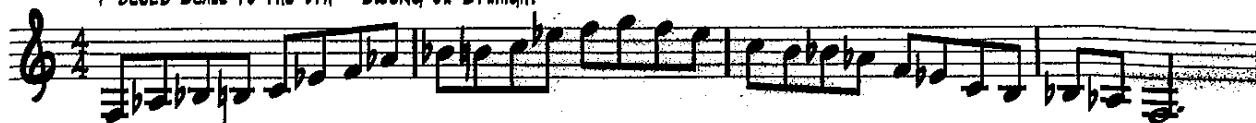
Musical notation for the Chromatic Scale in 4/4 time. The scale is written in bass clef and consists of 12 measures. The notes are: C2, C#2, D2, D#2, E2, E#2, F2, F#2, G2, G#2, A2, A#2. The first six measures are eighth notes, and the last six are quarter notes.

Musical notation for the Chromatic Scale in 4/4 time. The scale is written in bass clef and consists of 12 measures. The notes are: Bb2, B2, C3, C#3, D3, D#3, E3, E#3, F3, F#3, G3, G#3. The first six measures are eighth notes, and the last six are quarter notes.

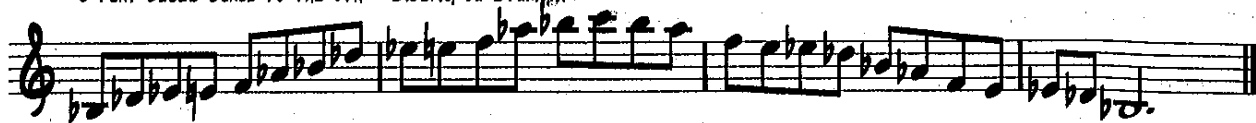
GUITAR

HIGH SCHOOL JAZZ AUDITIONS

F BLUES SCALE TO THE 9TH - SWUNG OR STRAIGHT



B FLAT BLUES SCALE TO THE 9TH - SWUNG OR STRAIGHT



II-V-I SCALE IN C - SWUNG OR STRAIGHT



II-V-I SCALE IN B FLAT - SWUNG OR STRAIGHT



CHROMATIC SCALE - STRAIGHT



PIANO

HIGH SCHOOL JAZZ AUDITIONS

F BLUES SCALE TO THE 9TH - SWUNG OR STRAIGHT

Musical notation for the F Blues Scale to the 9th, consisting of two staves (treble and bass clef) in 4/4 time. The melody in the treble clef starts on F4 and moves through the scale: F, G, A, Bb, C, D, Eb, E, F. The bass line starts on F3 and moves through the scale: F, G, A, Bb, C, D, Eb, E, F. The piece concludes with a double bar line.

B FLAT BLUES SCALE TO THE 9TH - SWUNG OR STRAIGHT

Musical notation for the B Flat Blues Scale to the 9th, consisting of two staves (treble and bass clef) in 4/4 time. The melody in the treble clef starts on Bb4 and moves through the scale: Bb, C, D, Eb, F, G, Ab, A, Bb. The bass line starts on Bb3 and moves through the scale: Bb, C, D, Eb, F, G, Ab, A, Bb. The piece concludes with a double bar line.

B-V-I SCALE IN C - SWUNG OR STRAIGHT

Musical notation for the B-V-I Scale in C, consisting of two staves (treble and bass clef) in 4/4 time. The melody in the treble clef starts on B4 and moves through the scale: B, C, D, E, F, G, A, B. The bass line starts on B3 and moves through the scale: B, C, D, E, F, G, A, B. The piece concludes with a double bar line.

Musical notation for an additional scale exercise, consisting of two staves (treble and bass clef) in 4/4 time. The melody in the treble clef starts on C4 and moves through the scale: C, D, E, F, G, A, B, C. The bass line starts on C3 and moves through the scale: C, D, E, F, G, A, B, C. The piece concludes with a double bar line.

II-V-I SCALE IN 8 FLAT - SWUNG OR STRAIGHT

Musical notation for the II-V-I scale in 8 flat, swung or straight. The piece is in 4/4 time. The right hand (treble clef) plays a melodic line with eighth notes, and the left hand (bass clef) plays a bass line with eighth notes. The key signature has two flats (B-flat and E-flat). The first measure starts on B-flat, the second on E-flat, and the third on B-flat. The piece ends with a double bar line.

Musical notation for the II-V-I scale in 8 flat, swung or straight. The piece is in 4/4 time. The right hand (treble clef) plays a melodic line with eighth notes, and the left hand (bass clef) plays a bass line with eighth notes. The key signature has two flats (B-flat and E-flat). The first measure starts on B-flat, the second on E-flat, and the third on B-flat. The piece ends with a double bar line.

CHROMATIC SCALE - STRAIGHT

Musical notation for the chromatic scale, straight. The piece is in 4/4 time. The right hand (treble clef) plays a chromatic scale with eighth notes, and the left hand (bass clef) plays a chromatic scale with eighth notes. The key signature has two flats (B-flat and E-flat). The piece ends with a double bar line.

Musical notation for the chromatic scale, straight. The piece is in 4/4 time. The right hand (treble clef) plays a chromatic scale with eighth notes, and the left hand (bass clef) plays a chromatic scale with eighth notes. The key signature has two flats (B-flat and E-flat). The piece ends with a double bar line.

Musical notation for the chromatic scale, straight. The piece is in 4/4 time. The right hand (treble clef) plays a chromatic scale with eighth notes, and the left hand (bass clef) plays a chromatic scale with eighth notes. The key signature has two flats (B-flat and E-flat). The piece ends with a double bar line.